

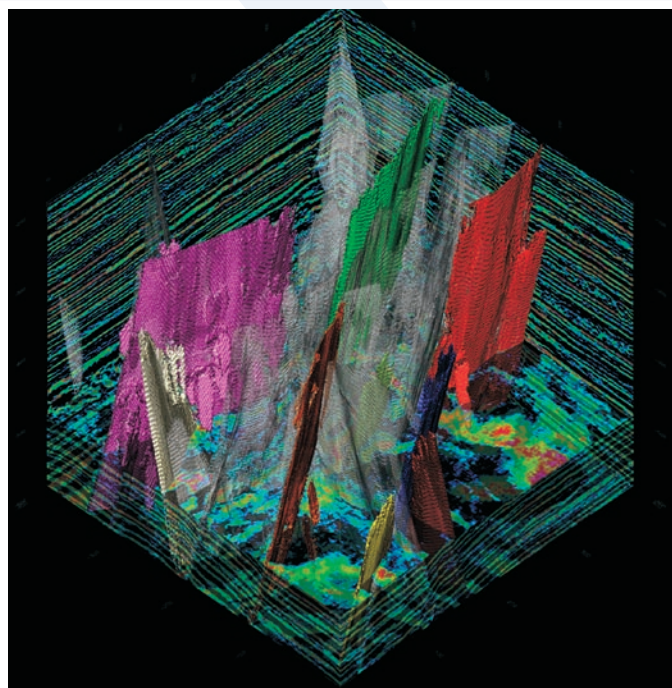


Local Fault Extraction

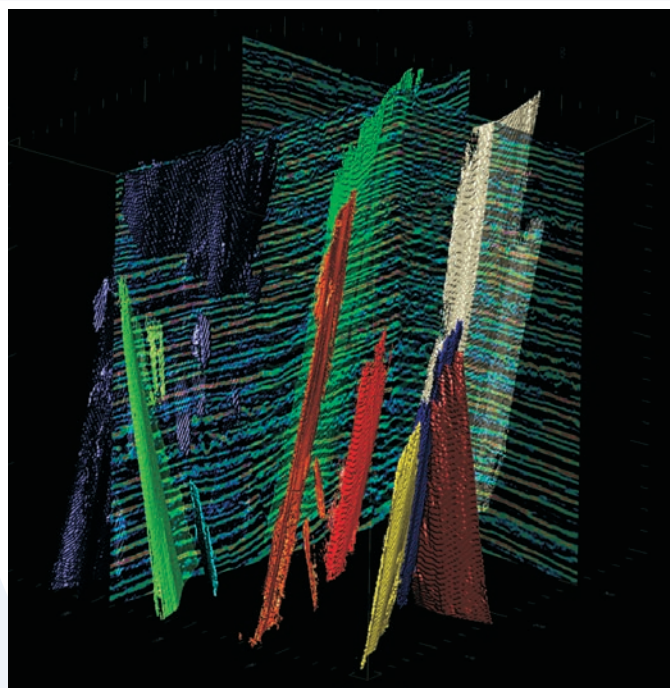
Generate clear fault surfaces with correct position and orientation.

LFE™ benefits exploration and production by

- reducing well location positioning risk.
- identifying potentially sealing faults.
- improving cycle time for fault detection by more than 10x.



Original seismic data and corresponding fault surfaces



3-D visualization of fault surfaces

TECHNOLOGY

LFE uses GeoEnergy's proprietary edge detection and volumetric non-linear filtering to extract its locally accurate fault surfaces.

DELIVERABLES

- Complete 3-D fault indicator volume
- Individually labeled fault surfaces
- Interpretation workstation ready

