

## LDAU™

## 3-D Local Dip/Azimuth/Uncertainty

LDAU™ enhances the clarity of seismic stratigraphy, fracturing, and faulting through the unique combination of local dip, azimuth, and orientation uncertainty.

LDAU™ benefits exploration and production by revealing

- subtle stratigraphic details.
- structural details related to folding and small scale faulting.
- potential fractured zones.

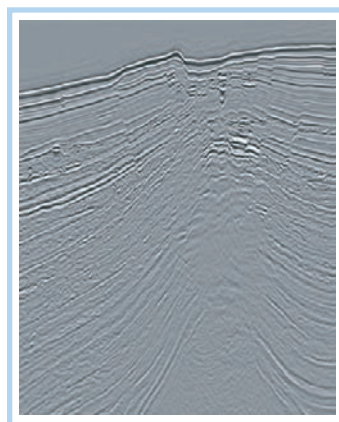
## BENEFITS

How does LDAU™ benefit exploration and production?

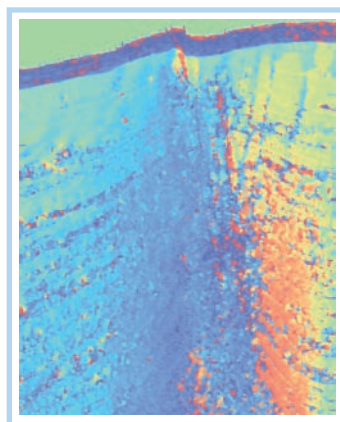
- Provides accurate values of local 3-D dip and azimuth
- Provides uncertainty on the local 3-D orientation
- Yields information about subtle stratigraphic details
- Shows structural details related to folding and small scale faulting
- Identifies potential fractured zones

## DELIVERABLES

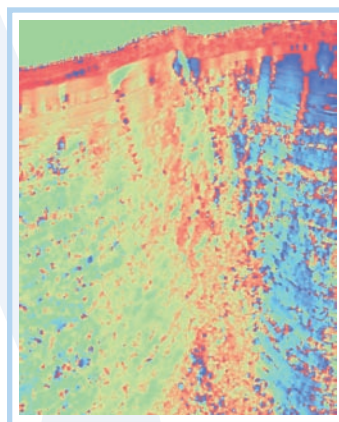
3-D SEG-Y volumes for 3-D Local Dip/Azimuth/Uncertainty



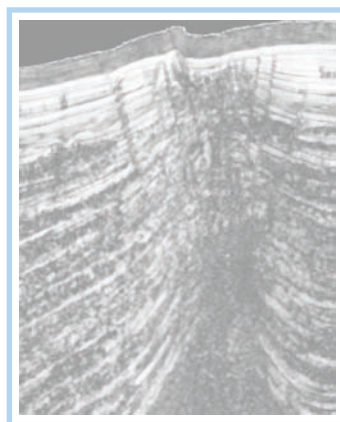
*Original seismic*



*Local 3-D Dip*



*Local 3-D Azimuth*



*Local Uncertainty*



Get the Clear Picture